



TIES MOBILE® GPS CONFIGURATION GUIDE

TABLE OF CONTENTS

CONFIGURING YOUR DEVICE TO USE GPS	3
SETTING UP A BLUETOOTH CONNECTION	3
CONFIGURING THE GPS INTERMEDIATE DRIVER WITH THE GPS SETTINGS ICON	6
WINDOWS MOBILE 6 STANDARD GPS SETUP	7
WINDOWS MOBILE 5 SETUP.....	8

CONFIGURING YOUR DEVICE TO USE GPS

If you have an external GPS receiver for your Windows Mobile powered device and would like to run GPS-enabled applications, there are some settings you may need to configure before your device will function properly.

Windows Mobile	✓
Windows Embedded CE	-

A Setting Up a Bluetooth Connection

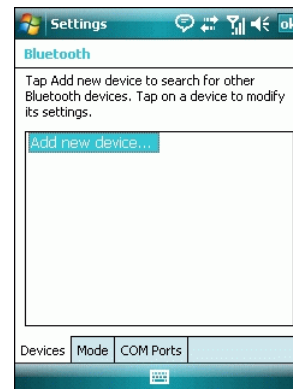
If your GPS receiver connects to your Windows Mobile powered device via Bluetooth, you will need to configure the connection using the Bluetooth Control Panel item. The following walkthrough demonstrates how to set up this connection, but you should consult the documentation for your GPS receiver to see if any additional steps are needed.

From the **Start** menu, click **Settings**. On the **Connections** tab, click the Bluetooth icon.

Turn on your GPS Receiver.

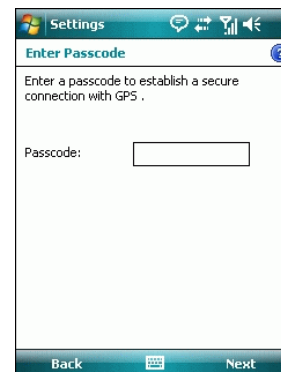
On the **Devices** tab, click **Add New Device...**. The settings application will search for your device.

When it is found, click **Next**.

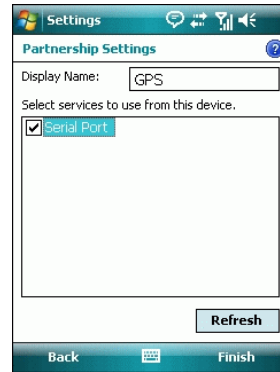


Your GPS receiver may require a passcode in order to create a secure connection. Consult your receiver documentation for this code.

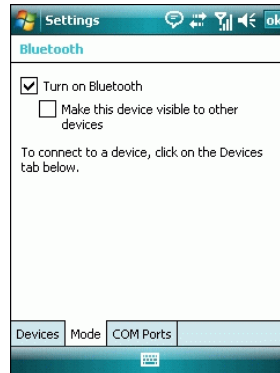
Enter the code and click **Next**.



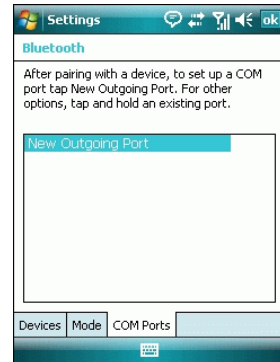
On the **Partnership Settings** screen, select **Serial Port** and click **Next**.



Select the **Mode** tab and check the **Turn on Bluetooth** checkbox if it is not already checked.



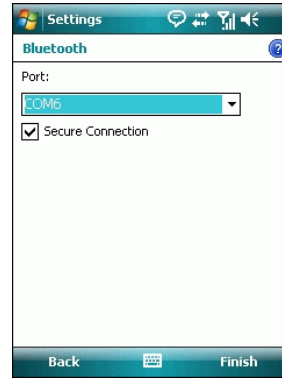
Select the **COM Ports** tab and click **New Outgoing Port**.



Select your receiver from the **Add a Device** list and click **Next**.



From the **Port** drop-down list, select a port number. Remember the port you choose. You will need it when you configure the GPS Intermediate Driver.



Click **Finish** and exit the Bluetooth Control Panel item.

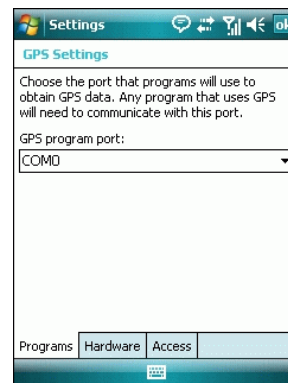
B Configuring the GPS Intermediate Driver with the GPS Settings Icon

The GPS Intermediate Driver is a software layer between a Windows Mobile application and the GPS hardware drivers. This allows applications to work with a variety of GPS hardware. The GPS Intermediate Driver uses the registry to determine what COM port should be used to communicate with the GPS hardware. The recommended way to configure the registry to work with your GPS device is the GPS Settings icon. For detailed information about the GPS Intermediate Driver and the associated registry settings, see [GPS Intermediate Driver](#).

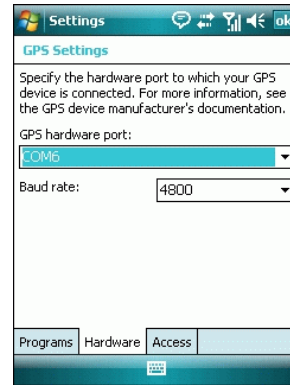
Using the GPS Settings Icon

From the **Start** menu, click **Settings**. On the **System** tab, click the **External GPS** icon. On some devices, this item has a different name. See the notes below.

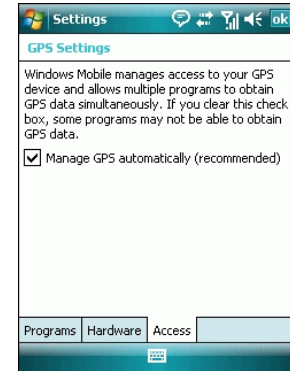
On the **Programs** tab, select any available COM port from the **GPS Program Port** drop-down list. The GPS data sent through the GPS Intermediate Driver is streamed to applications through this port. This should not be the same port that your GPS receiver is configured to use.



On the **Hardware** tab, select the COM port your GPS receiver is configured to use from the **GPS Hardware Port** drop-down list.



On the **Access** tab, make sure that the **Manage GPS Automatically** checkbox is checked.



NOTE:

Devices running Windows Mobile 6 Professional include the External GPS item in the Settings panel. Devices running Windows Mobile 6 Standard do not include this item.

However, the Windows Mobile 6 Standard SDK includes an application, called Settings.exe that allows you to configure the GPS Intermediate Driver. The default installation location for this application is:

C:\Program Files\Windows Mobile 6 SDK\Tools\GPS.

Copy this application to your device using ActiveSync, then click the application's icon to launch the program.

C Windows Mobile 6 Standard GPS Setup

From File Explorer, navigate to **Device>Program Files>TiesMobile6** and run the **Settings.exe** to launch the GPS Configuration.

How do I set up an outgoing Bluetooth COM port?

The **New Outgoing Port** menu command is available only if one or more Bluetooth-connected devices supports serial (COM) connections.

Make sure that your device is currently connected to the other device via Bluetooth.

On the Home screen, click **Start > Settings > Bluetooth**.

Click **Bluetooth > Menu > COM Ports**.

Click **Menu > New Outgoing Port**.

Select a numbered COM port from the list.
If the port cannot be created, it is in use.
Select a different numbered port.

To use this COM port to communicate only with devices with which your device has a Bluetooth partnership, select the **Secure Connection** check box.

Click **Done**.

D Windows Mobile 5 Setup

IF GPS is not visible in Settings, Login to the TiesMoblie6 Application for the first time and then Exit. The application will attempt to UNHIDE the GPS icon for your use.